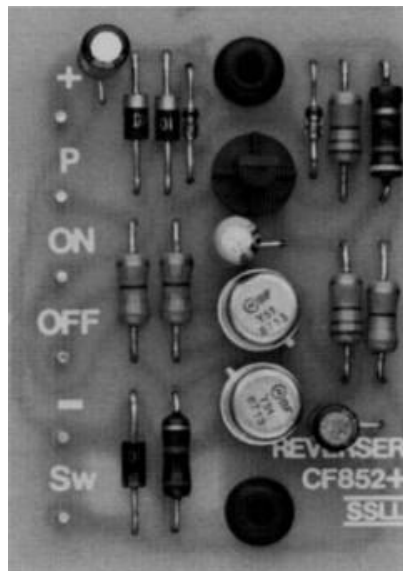


SOLID STATE

Stop Reverser CF852



North American Office:
5600 General Washington Drive
Suite B211, Alexandria, VA 22312
USA
Toll Free: (800) 272-4775
T: (703) 933-0024
F: (703) 933-0025



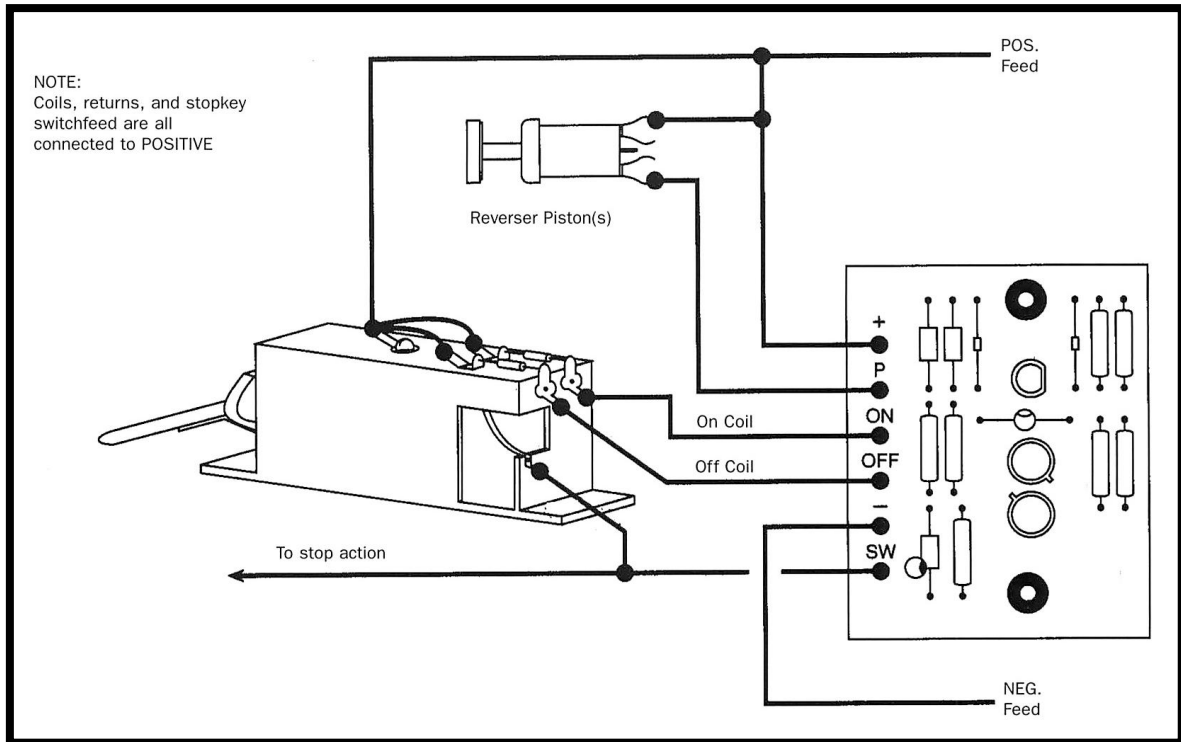
European Office:
Twickenham Avenue
Brandon, Suffolk
IP27 0PD
United Kingdom
T: +44 (0)1842 814814
F: +44 (0)1842 813802

www.ssosystems.com

Stop Reverser

The solid state equivalent of a conventional electro-mechanical reverser, but with the advantage of silence, simplicity, reliability, and no fussy contact regulation requirements – ever! Solid state reversers may be used in conjunction with conventional as well as solid state actions, and will work well with any standard electric or electro-pneumatic drawknob or stopkey assembly.

Connecting Up



Specification

Part Number

Reverser Unit 620852A1

Dimensions

64mm × 45mm (2½" × 1¾")

Inputs

Positive from piston

Positive make for ON from Stop

Output

Negative to On and Off coils

Operating Voltage

12-18 Volt as standard. Please state if you require 18-24 Volt operation.

Output capability

0.6 Amperes